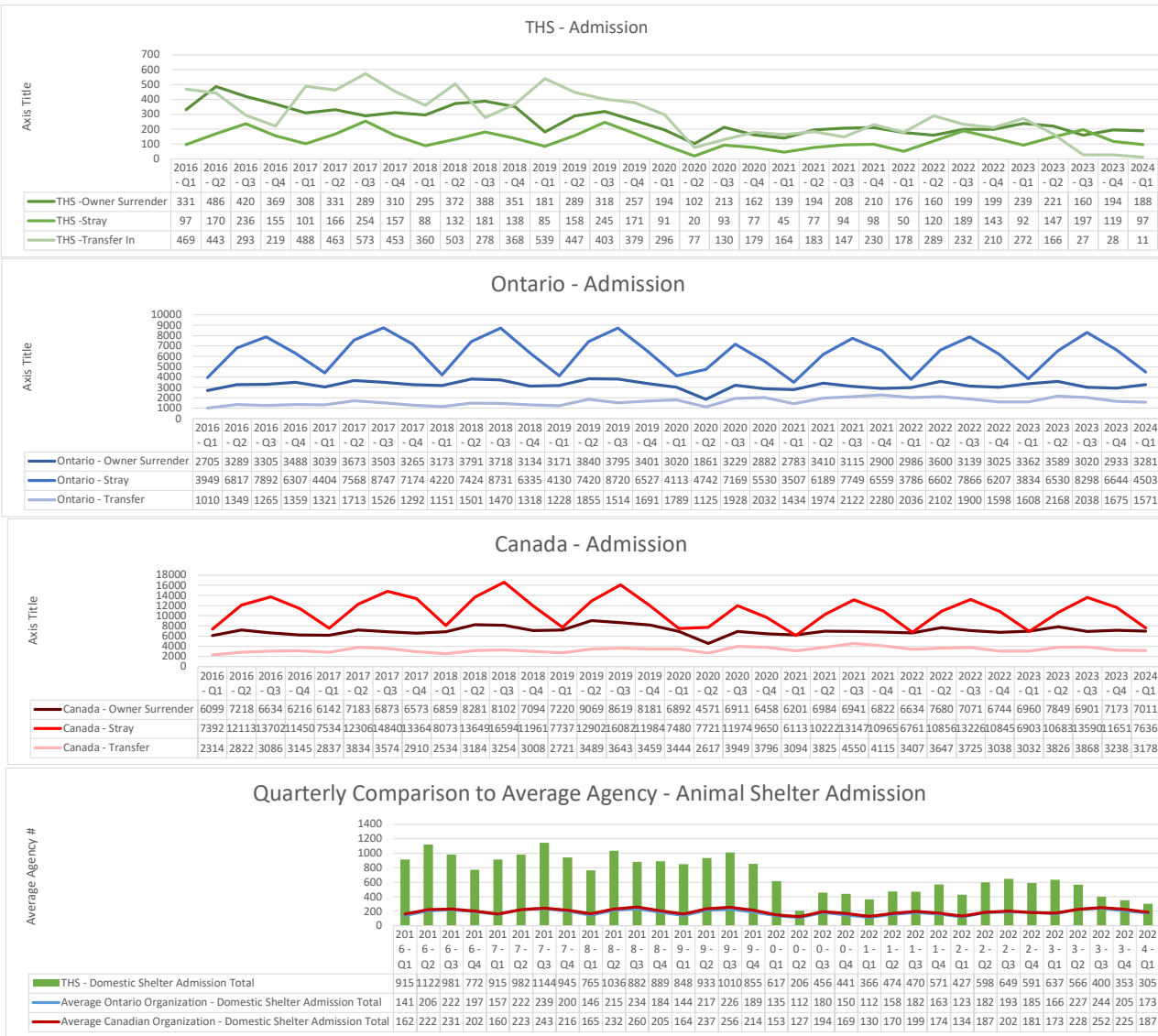




**Comparative Report on Shelter Care Operations &
The Current State of Sheltering in Canada
Quarter 1, 2024**

Comparative data is sourced from Animal Welfare Organizations nationally that are using Petpoint as their shelter database. (Ontario N=60, Canada N=112)

SHELTER CARE ADMISSIONS COMPARISON CHARTS



QUARTER 1 Admissions - 2024

Toronto Humane Society

In the first quarter of 2024, Toronto Humane Society is seeing comparable admission volumes to 2019 for both owner surrenders and strays. Transfer admissions are down in comparison to prior quarters, this is a trend we have been experiencing from Q3 of 2023 forward. This downward trend is a result of resource reallocation to focus on support services needed in our direct community. There was a planned refocus on preventive veterinary and support services to address the local crisis in access to care, and this has limited our capacity to support communities outside of Toronto.

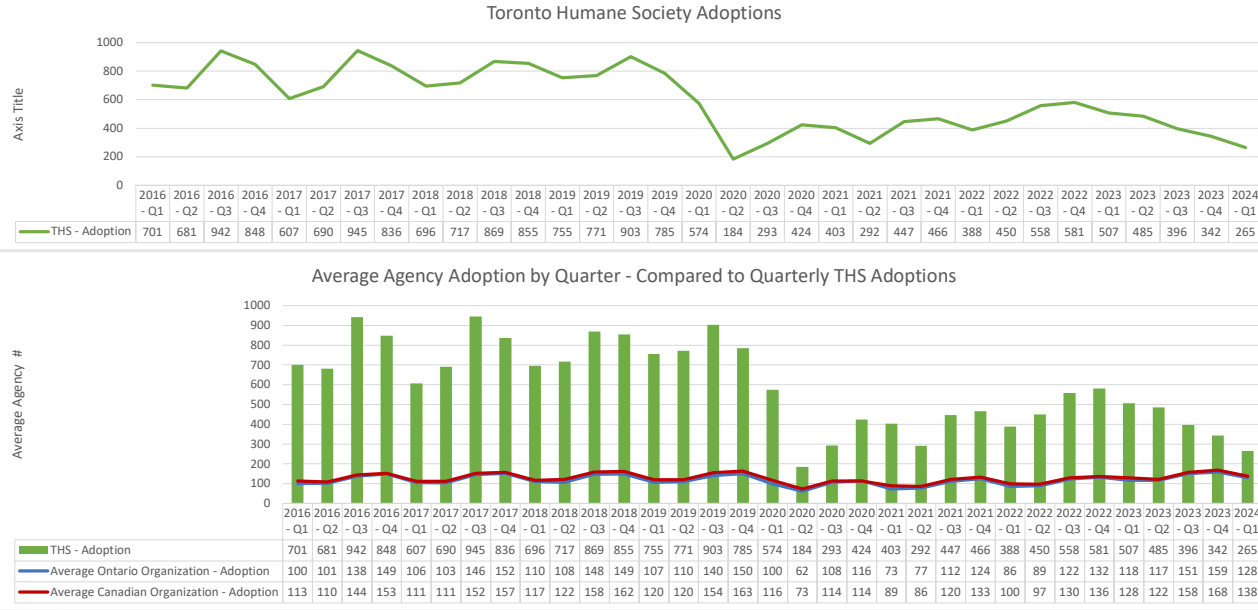
first quarter of 2024, Ontario saw a total of 8,359 admissions, consisting of 3,281 owner surrenders, 4,503 strays, and 1,575 transfers. Compared to Q1 2023, this represents an increase of approximately 17%. During the COVID-19 period (2020-2023), admissions fluctuated significantly, with notable decreases in some quarters due to restrictions and economic challenges.

As we transition out of the pandemic, the current rise underscores the importance of community outreach programs focused on responsible pet ownership and preventive measures such as spaying and neutering.

Canada Nationally, shelter admissions for Q1 2024 totaled 21,009, including 7,011 owner surrenders, 7,636 strays, and 6,362 transfers. This marks a 20% increase from Q1 2023. The COVID-19 period saw variability in admissions due to lockdowns and economic impacts, but the recent increase suggests a return to and surpassing of pre-pandemic levels. Coordinated national strategies are essential to manage the growing number of animals entering shelters and to promote adoption and other lifesaving initiatives.

General Note: In Q1 2024, both Ontario and Canada showed higher admission rates compared to the average agency data. The average Ontario organization saw 3,281 admissions, while the average Canadian organization recorded 3,178 admissions. These figures represent increases of 17% and 20%, respectively, over Q1 2023. Historical data from 2016 to 2023 indicates seasonal peaks in admissions during warmer months. The COVID-19 period added variability, with some quarters experiencing significant drops. Recognizing these patterns is crucial for effective resource allocation and strategic planning to manage the increased workload.

ADOPTIONS - COMPARISON CHARTS



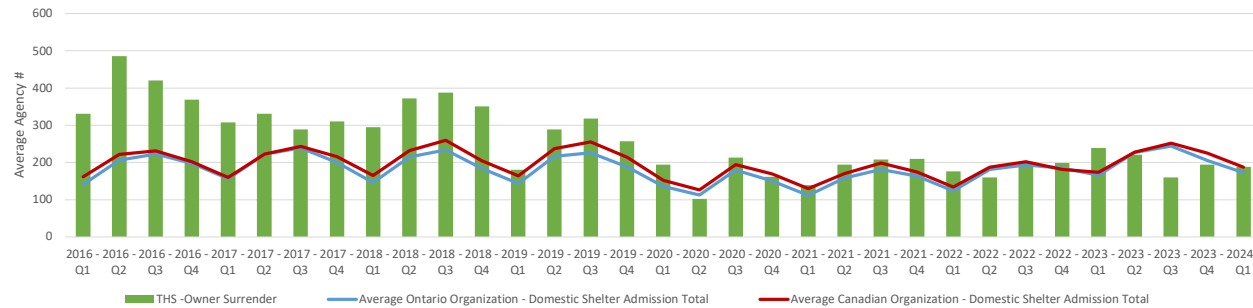
QUARTER 1 - 2024 - Adoption

Toronto Humane Society facilitated 265 adoptions in Q1 2024, a 10% decrease from the same quarter in 2023, this is correlative with our admission adjustments due to a refocus on priorities as noted above. The average agency adoptions for the same period were 128 for Ontario and 138 for Canada, showing a slight increase. Adoption rates exhibit seasonal trends, typically peaking in spring and summer. During the COVID-19 period, adoption rates fluctuated, with spikes due to increased interest in pet ownership during lockdowns.

Comparison to Average Agency

Owner surrenders at Toronto Humane Society in Q1 2024 totaled 188, reflecting a decrease of 5% compared to the same period last year. The average owner surrenders for Ontario and Canada were 3,281 and 3,178, respectively, indicating overall stability. Historical data from 2016 to 2023 shows seasonal patterns, with higher numbers typically observed in summer. The COVID-19 period introduced additional variability. The current trend suggests a return to typical patterns, and continued support programs for pet owners will be crucial to further reduce surrender rates.

Average Agency Owner Surrenders by Quarter - Compared to Quarterly THS Owner Surrender

**QUARTER 1, 2024**

Toronto Humane Society operated at 36% of its 2019 volume in Q1 2024, as noted above this is due to a refocus on preventive and supportive local programming in place of transport efforts in other communities, a shift brought on by the growing challenge of access to care in our community. This decrease highlights the impact of ongoing challenges and changes in the industry which passed a tipping point in the pandemic.

Ontario % of 2019 Operation Volume

Ontario's shelter operations in Q1 2024 were at 120% of the 2019 volume, showing a 20% increase compared to Q1 2023. Historical analysis indicates that shelter operations are influenced by seasonal patterns, with peaks typically in the summer.

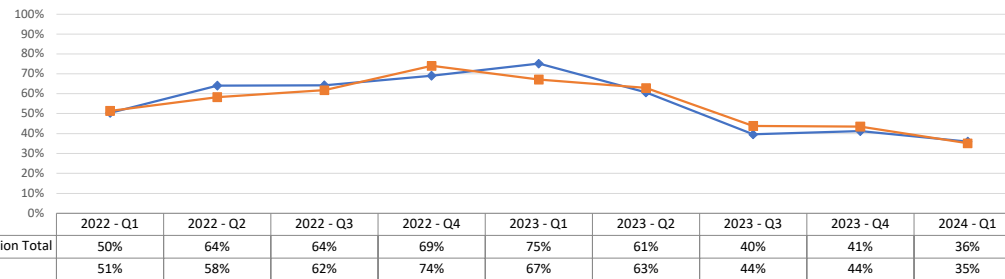
Canada % of 2019 Operation Volume

Across Canada, shelter operations for Q1 2024 reached 115% of the 2019 levels, demonstrating a 15% increase compared to Q1 2023.

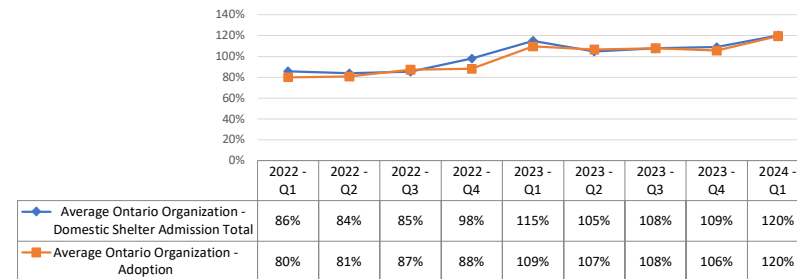
General Note:

The current trends indicate a return to and surpassing of pre-pandemic levels, highlighting the need for continued collaboration and resource sharing among shelters to sustain growth and improve outcomes for animals. It is important to note that although admissions are up, adoptions are also keeping pace, leading to questions surrounding the causation of shelter overcrowding that is being noted across the country. Length of Stay is a crucial variable that is in need of greater evaluation and analysis in organizations across the country.

THS % of 2019 Operation Volume



Ontario % of 2019 Operation Volume



Canada % of 2019 Operation Volume

